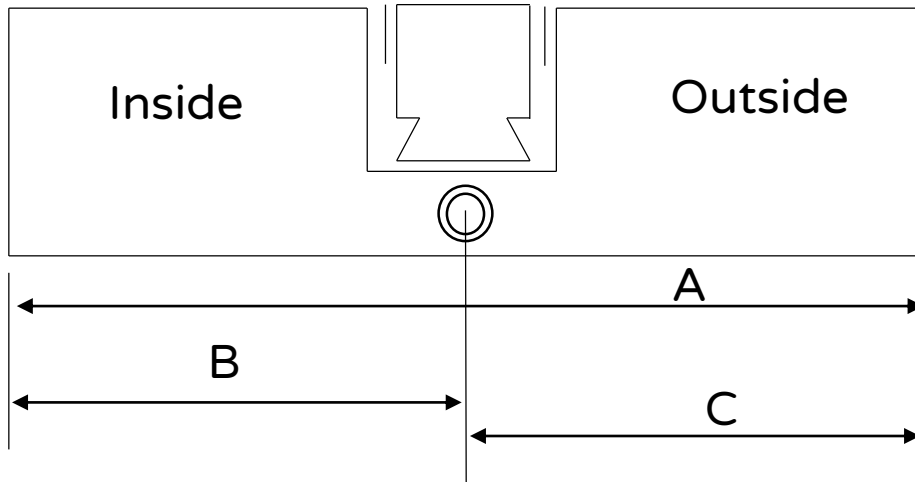




Door Cylinder Sizing



A = Total Cylinder Length

B = Inside length from centre C = Outside length from centre

Example:

85mm Double cylinder = Inside 45mm. Outside 40mm

85mm Thumb Turn cylinder = (Thumb Turn) Inside 45mm. Outside 40mm.

Available in Satin Brass & Satin Nickel as standard.

Antique Brass, Dark Bronze, Polished Chrome & Polished Brass also available.

Size (mm)	Single (1/2) Cylinder	Size Range (mm)	Double	Thumb Turn
40	✓	-	✗	✗
45	✓	-	✗	✗
50	✓	-	✗	✗
55	✓	-	✗	✗
60	✓	30/30	✓	✓
65	✓	-	✗	✗
70	✓	35/35	✓	✓
80	✓	40/40, 35/45	✓	✓
85	✗	40/45	✓	✓
90	✗	45/45, 35/55, 40/50	✓	✓
95	✗	40/55, 45/50	✓	✓
100	✗	50/50, 40/60, 45/55	✓	✓
110	✗	55/55	✓	✓
120	✗	60/60	✓	✓
Specials	✗	35/65, 35/70, 35/80	✓	✓